

LAWS Touch Pendant™

Liburdi Automated Welding Systems

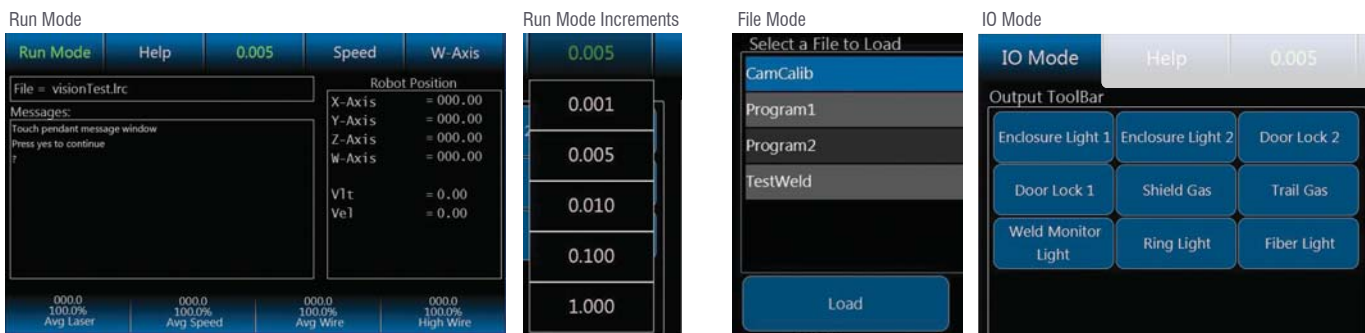
The LAWS Touch Pendant™ is the next generation full function pendant for Liburdi Automated Welding Systems. The LAWS Touch Pendant™ builds on the weld specific feature set and intuitive button layout of its predecessor, the Seal Pendant, while enhancing the operator experience through a 7" WVGA touch screen.

The strength of Liburdi's pendants have been the ability to quickly dial in the correct parameters without searching for soft keys and having axis specific control. The LAWS Touch Pendant™ continues this using tactile control buttons with snap action feel and audible feedback. As well, using encoder knobs with detents, allows the operator to know exactly

how much a key process variable has been changed.

The new 7" WVGA resistive touch screen and modern operating system allows for multi-language support, configurable soft keys and integrated alarm manager. This allows operators to toggle digital outputs and clear alarm message directly from the pendant.

Overall, this unit is more reliable, has increased configurability, is more compact and is lighter than the Seal Pendant. It can be ordered to be compatible with previous LAWS systems but new features require WinLAWS™ 3.4.17 or higher.



SPECIFICATIONS

- 7" WVGA resistive Touch Screen
- NVIDIA Tegra 2 Dual Core Processor
- Tactile Process Control Buttons (Start, Stop, Wire Lock, AVC Lock, Shield Gas, Dry Run)
- Tactile Axis Control Buttons (X, Y, Z wirefeed and unlimited AUX)
- Digital Output Toolbox
- Trim Sites
- Load Programs
- Multi Language Support Independent of WinLAWS™
- Compatible with WinLAWS™ Software 3.4.17 or higher
- Upgrade Hardware, Retrofit Mounting Brackets and Interface Controller

DIMENSIONS

8" (H) x 11" (W) x 1.7" (D) inches
203 mm x 279 mm x 43 mm

WEIGHT

4 lbs
1.8 kg

PENDANT CONTROLS



© Liburdi Automation Inc. March 11, 2013. Specifications subject to change



Welding Solutions That Work

INTERNATIONAL | TEL#: 1-905-689-0734 | liburdi@liburdi.com
www.liburdi.com