

Pipe Welding Head

Block Head

The Liburdi Dimetrics Block Head is designed for the automatic, in position GTAW (TIG) welding of pipes ranging from 2 inches to flat plate (and even ID curved surfaces). The Block head's small axial clearance makes this weld head compact and an affordable alternative for any industry where high integrity, repeatability and quick welds are required.

The Block Head provides full function (with automatic Arc Voltage Control and Oscillation), cold wire configuration, with capability to adapt to both Hot Wire and Narrow Groove applications. It's versatile, high performance specification makes it ideally suited to run with the new and powerful Liburdi Dimetrics Gold Track VI power supply but can also be adapted to all previous Gold Track models.

A smooth and accurate weld head rotation is achieved with the Liburdi Dimetrics patented backlash free friction drive mechanism.

All torch bodies are water-cooled and use commercially available standard torch consumables. The Block Head can accommodate the latest range of FireView direct vision systems.

A variety of wire feeder and spool holder configurations are available including dual wire feed for bi-directional welding, to enhance the Block Head's utility.



Weld Quality Starts in the Arc

USA | tel: 1-704-230-2510 | dimmktg@dimetrics.com
INTERNATIONAL | tel: 1-905-689-0734 | liburdi@liburdi.com
EUROPE | tel: +31-6-2036-1018 | liburdieurope@liburdi.com
www.liburdi.com

Block Head

Standard Features

- Liquid Cooled Torch
- AVC (Arc Voltage Control)
- Torch Oscillation
- Electric Torch Center Steering
- Can Weld in Forward and Reverse Directions

Specifications

- Available in hot wire version
- Available with standard TIG, hot wire TIG or narrow groove TIG torch
- Current Rating: 300 Amperes @ 100% (standard torches)
- Current Rating: 500 Amperes @ 100% (hot wire torch)
- Maximum travel speed: 20 IPM (50cm/min)
- Pipe sizes from 2" (60mm OD) to infinity
- Flat and curved surface welding with "straight tracks" and "flexible tracks"
- Inside welding with ID adapter kit from 20" (500mm) and up
- Wall thickness 0.125" - 6" (3-150mm) with appropriate accessories
- Available with "C" style front end - enables wire to feed on either side of torch
- Available with "Flip/Flop" style wire spool holder - enables use of large or small wire spool
- Available with "C" torch - Low profile torch (see picture)

Options

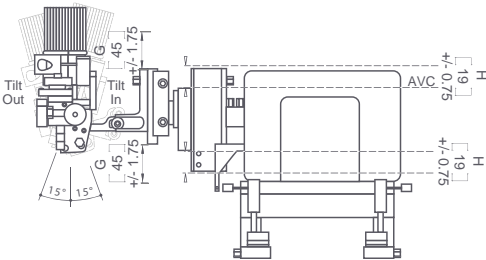
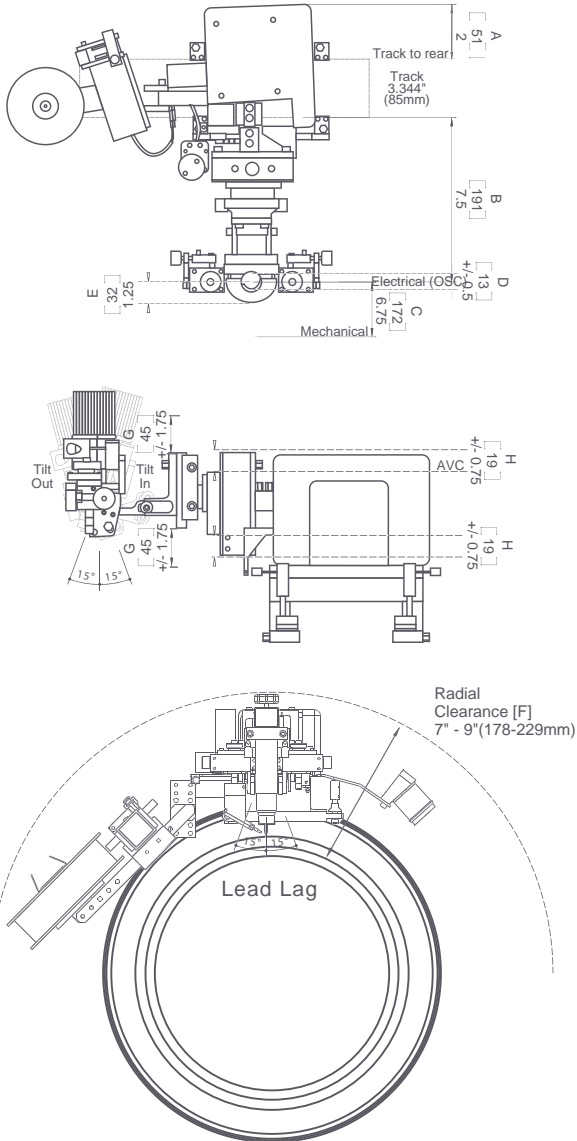
- Narrow groove torch
- High speed wire feeder, 400 IPM (10/min)
- Large spool
- Hot wire kit
- Socket adapter kit
- ID adapter kit (for welding inside pipe)
- AVC - Oscillator interchange kit
- Extension cables 50' (15m), up to 6 extension cables can be used depending on application
- Video front end for remote viewing
- Narrow gap video front end

Physical Characteristics

- Weight without cable: 18 lbs (8kg) depending on version
- Cable length: 35' (11m)
- Travel speed: 0-20 IPM (50cm/min)
- Wire feed speed: 0-100 IPM COLD WIRE, 0-400 IPM HOT WIRE
- Filler wire size range: 0.030" (0.8mm) - 0.045" (1.2mm)
- Spool holder: 2 lbs and 10 lbs
- AVC stroke electrical: 1.5" (38mm), mechanical: depending on version
- Oscillation stroke electrical: 1.0" (25mm), mechanical: 4" (100mm)

*CE Compliant Version Available

DIMENSION	DESCRIPTION	
A	Track-to-Rear	2"(51mm)
B	Track-to-Electrode	7.5"(191mm)
Nominal	Track-to-Joint	
C	Center Adjust	3.75"(172mm)
D	Oscillator Stroke	+/- 0.5" (13mm)
E	Electrode-to-Front	1.25"(32mm)
F	Radial Clearance	7" - 9"(178-229mm)
G	Up/Down Adjust	+/- 1.75"(45mm)
H	AVC Stroke	+/- 0.75"(19mm)
Lead/Lag	Torch Adjust	15°/15°
Tilt	Torch Adjust	15°/15°
	Wire Feeder	120 IPM(3m/min)
	Spool Holder	4"(100mm)



Radial Clearance [F]
7" - 9"(178-229mm)



Liburdi Dimetrics GoldTrack® VI is a suitable power supply for the Block Head Weld System



Weld Quality Starts in the Arc